

If Zebtron columns do not provide you with equivalent or better separations as compared to any other GC column of the same phase and comparable dimensions, return the column with comparative data within 45 days for a FULL REFUND.

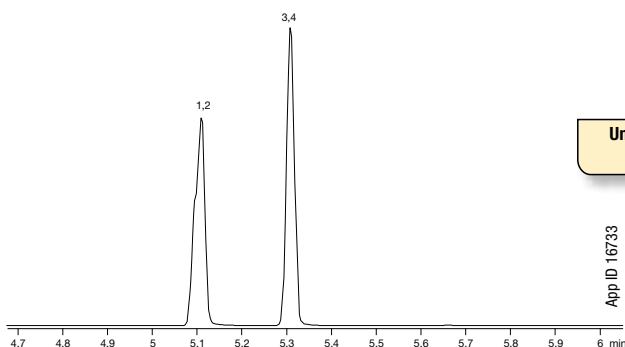
Zebtron ZB-Drug-1 ~exclusive~

- Optimized phase for the separation of drugs of abuse
- Provides fast analysis with great peak shape
- Improves resolution of target analytes from matrix interferences
- Specially deactivated to improve quantitation for drug compounds
- Temperature Limits: 40 to 320/340 °C

Applications

- Drugs of Abuse

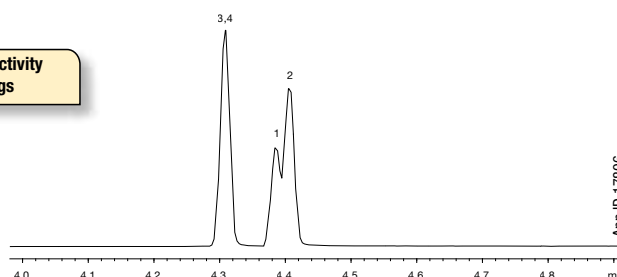
Opiates on a ZB-5ms



Unique Selectivity
for Drugs

App ID 16733

Opiates on a ZB-Drug-1

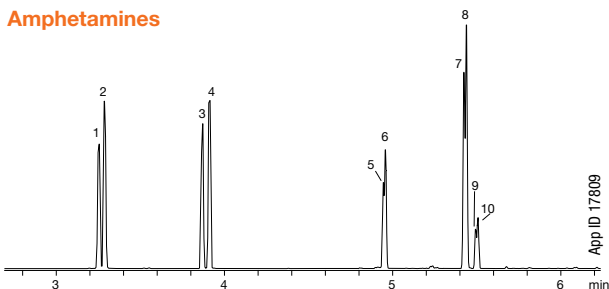


App ID 17806

Column: Zebtron ZB-5ms
Dimensions: 10 meter x 0.18 mm x 0.18 µm
Part No.: 7CD-G010-08
Injection: Split 10:1 @ 240 °C, 1 µL
Carrier Gas: Helium @ 1.2 mL/min (constant flow)
Oven Program: 140 °C to 320 °C @ 20 °C/min for 1 min
Detector: MSD @ 230 °C/min
Sample: Analytes @ 10 ppm BSTFA/Pyridine
 1. Codeine-d6
 2. Codeine
 3. Morphine-d3
 4. Morphine

Column: Zebtron ZB-Drug-1
Dimensions: 10 meter x 0.18 mm x 0.18 µm
Part No.: 7CD-G023-08
Injection: Split 10:1 @ 280 °C, 1 µL
Carrier Gas: Helium @ 55 cm/sec (constant flow)
Oven Program: 180 °C to 340 °C @ 20 °C/min
Detector: MSD @ 230 °C
Sample: Analytes @ 10 ppm BSTFA/Pyridine
 1. Codeine-d6
 2. Codeine
 3. Morphine-d3
 4. Morphine

Amphetamines



App ID 17809

Column: Zebtron ZB-Drug-1
Dimensions: 10 meter x 0.18 mm x 0.18 µm
Part No.: 7CD-G023-08
Injection: Split 10:1 @ 280 °C, 0.1 µL
Carrier Gas: Helium @ 55 cm/sec (constant flow)
Oven Program: 70 °C to 130 °C @ 20 °C/min to 270 °C @ 30 °C/min
Detector: MSD @ 230 °C
Sample: Analytes are 40 ppm derivitized with HFBA
 1. Amphetamine-d11 6. MDA
 2. Amphetamine 7. MDMA-d5
 3. Methamphetamine-d14 8. MDMA
 4. Methamphetamine 9. MDEA-d5
 5. MDA-d5 10. MDEA

Ordering Information

Zebtron ZB-Drug-1 GC Columns

ID(mm)	df(µm)	Temp. Limits °C	Part No.	Price
10-Meter				
0.18	0.18	40 to 320/340	7CD-G023-08	
15-Meter				
0.25	0.25	40 to 320/340	7EG-G023-11	
30-Meter				
0.25	0.25	40 to 320/340	7HG-G023-11	

Note: If you need a 5 in. cage, simply add a (-B) after the part number, e.g., 7HG-G023-11-B. Some exceptions may apply. Agilent 6850 and some SRI and process GC systems use only 5 in. cages. See p. 91.



ZB-Drug-1 Test Mix **Part No.: AGO-8431**
 Price:



Contact Phenomenex or your local Phenomenex distributor for additional GC products and applications.



Extend column lifetime. Add a Z-guard to your next Zebtron GC order.