

# Zebron® GC Columns



If Zebron columns do not provide you with equivalent or better separations as compared to any other GC column of the same phase and comparable dimensions, return the column with comparative data within 45 days for a FULL REFUND.

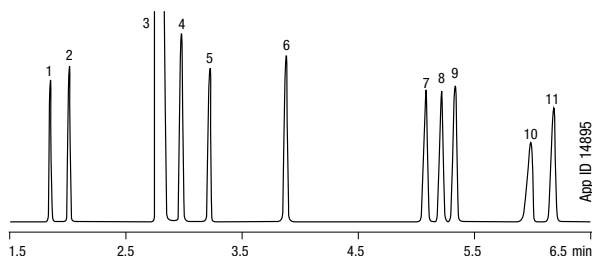
## ZB-WAX

- High polarity column with low bleed (MS certified) for improved results
- Highly stable, long lifetime
- Low activity for amines
- Bonded, solvent rinsible
- Excellent chromatography of polar complex mixtures
- Widely used for profiling and “fingerprinting”
- Close equivalent to USP Phase G16
- Temperature Limits: 40 to 250/260 °C (Isothermal/TPGC)

### Alternative to Any Polyethylene Glycol Phase:

- |                |                |             |
|----------------|----------------|-------------|
| • HP-INNOWax   | • EC-Wax       | • DB-WAXetr |
| • Rtx-WAX      | • Stabilwax-DB | • Met-Wax   |
| • CP-Wax 57 CB | • Sol.GEL-WAX  | • Omegawax  |
| • 007-CW       | • FAMEWAX      |             |

### BTEX in Under 6 Minutes!



**Column:** Zebron ZB-WAX  
**Dimensions:** 30 meter x 0.32 mm x 0.50 µm  
**Part No.:** 7HM-G007-17  
**Injection:** Split 20:1 @ 250 °C, 0.2 µL  
**Carrier Gas:** Helium @ 2 mL/min (constant flow)  
**Oven Program:** 60 °C to 75 °C @ 15 °C/min to 90 °C @ 3 °C/min (hold 3 min)  
**Detector:** FID @ 300 °C  
**Sample:**

1. Pentane
2. Heptane
3. Solvent (methylene chloride)
4. Benzene
5. Decane
6. Toluene
7. Ethylbenzene
8. *p*-Xylene
9. *m*-Xylene
10. Dodecane
11. *o*-Xylene

### Column Profile



### Applications

- |                  |                        |                   |
|------------------|------------------------|-------------------|
| • Alcohols       | • Flavors / Fragrances | • Styrene         |
| • Aldehydes      | • Glycols              | • Xylenes         |
| • Aromatics      | • Pharmaceuticals      | • Basic Compounds |
| • Essential oils | • Solvents             |                   |

### Ordering Information

Zebron ZB-WAX GC Columns				
ID(mm)	df(µm)	Temp. Limits °C	Part No.	Price
<b>10-Meter</b>				
0.10	0.10	40 to 250/260	7CB-G007-02	
<b>15-Meter</b>				
0.25	0.25	40 to 250/260	7EG-G007-11	
0.32	0.25	40 to 250/260	7EM-G007-11	
0.32	0.50	40 to 250/260	7EM-G007-17	
0.53	1.00	40 to 250/260	7EK-G007-22	
<b>20-Meter</b>				
0.18	0.18	40 to 250/260	7FD-G007-08	
<b>30-Meter</b>				
0.25	0.15	40 to 250/260	7HG-G007-05	
0.25	0.25	40 to 250/260	7HG-G007-11	
0.25	0.50	40 to 250/260	7HG-G007-17	
0.25	1.00	40 to 250/260	7HG-G007-22	
0.32	0.15	40 to 250/260	7HM-G007-05	
0.32	0.25	40 to 250/260	7HM-G007-11	
0.32	0.50	40 to 250/260	7HM-G007-17	
0.53	0.50	40 to 250/260	7HK-G007-17	
0.53	1.00	40 to 250/260	7HK-G007-22	
<b>60-Meter</b>				
0.25	0.15	40 to 250/260	7KG-G007-05	
0.25	0.25	40 to 250/260	7KG-G007-11	
0.25	0.50	40 to 250/260	7KG-G007-17	
0.32	0.25	40 to 250/260	7KM-G007-11	
0.32	0.50	40 to 250/260	7KM-G007-17	
0.53	1.00	40 to 250/260	7KK-G007-22	

Note: If you need a 5 in. cage, simply add a (-B) after the part number, e.g., 7HG-G007-11-B. Some exceptions may apply. Agilent 6850 and some SRI and process GC systems use only 5 in. cages. See p. 91.



**ZB-WAX Test Mix** Part No.: AGO-5158  
 Price:



Contact Phenomenex or your local Phenomenex distributor for additional GC products and applications.



**Extend column lifetime. Add a Z-guard to your next Zebron GC order.**