

If Zebron columns do not provide you with equivalent or better separations as compared to any other GC column of the same phase and comparable dimensions, return the column with comparative data within 45 days for a FULL REFUND.

ZB-BAC-1 and ZB-BAC-2 ~exclusive~

- Proprietary phase specially designed for blood alcohol analysis
- Enhanced accuracy for post mortem samples
- Fast run time with baseline resolution of key components in just 2 minutes
- Enhanced resolution of ethanol and acetone peaks
- Achieve confirmation with two elution order changes when running columns in parallel
- Allows for the use of t-butanol or n-propanol as an internal standard
- Temperature Limits: -20 to 260/280 °C (Isothermal/TPGC)

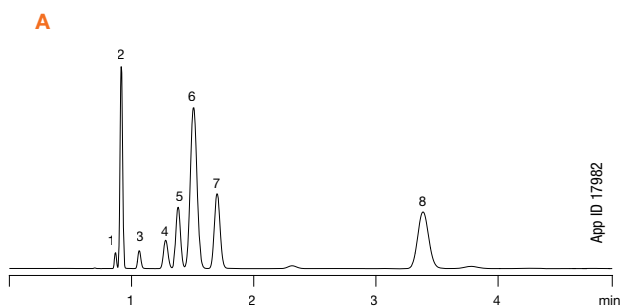
Alternative to:

- Rtx-BAC1
- DB-ALC1
- Rtx-BAC2
- DB-ALC2

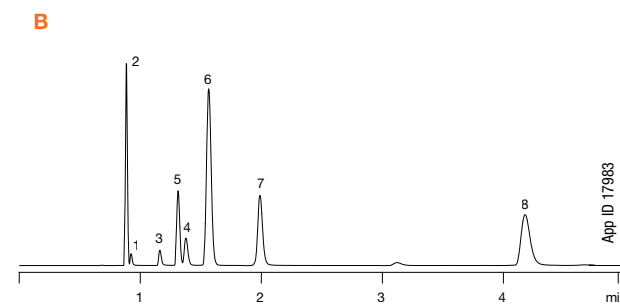
Applications

- Blood Alcohol Analysis
- Glycols
- Abused Inhalant Anesthetics
- Industrial Solvents

Blood Alcohols on Primary Column



Blood Alcohols on Confirmation Column



Column: A) Zebron ZB-BAC-1
B) Zebron ZB-BAC-2
Dimensions: A) 30 meter x 0.53 mm x 3.00 µm
B) 30 meter x 0.53 mm x 2.00 µm
Part No.: A) 7HK-G021-36
B) 7HK-G022-32
Injection: Split 0.8:1 @ 150 °C, 1 mL
Carrier Gas: Helium @ 80 cm/sec (constant flow)
Oven Program: 40 °C (Isothermal)
Detector: FID @ 250 °C
Sample: Analytes 0.025 % and internal standards 0.100 % in water
1. Methanol
2. Acetaldehyde
3. Ethanol
4. Isopropanol
5. Acetone
6. t-Butanol (IS)
7. n-Propanol (IS)
8. 2-Butanol (IS)

Ordering Information

Zebron ZB-BAC-1 GC Columns				
ID(mm)	df(µm)	Temp. Limits °C	Part No.	Price
30-Meter				
0.32	1.80	-20 to 260/280	7HM-G021-31	
0.53	3.00	-20 to 260/280	7HK-G021-36	
Zebron ZB-BAC-2 GC Columns				
ID(mm)	df(µm)	Temp. Limits °C	Part No.	Price
30-Meter				
0.32	1.20	-20 to 260/280	7HM-G022-25	
0.53	2.00	-20 to 260/280	7HK-G022-32	

Note: If you need a 5 in. cage, simply add a (-B) after the part number, e.g., 7HM-G021-31-B or 7HM-G022-25-B. Some exceptions may apply. Agilent 6850 and some SRI and process GC systems use only 5 in. cages. See p. 91.



Contact Phenomenex or your local Phenomenex distributor for additional GC products and applications.



Extend column lifetime. Add a Z-guard to your next Zebron GC order.