

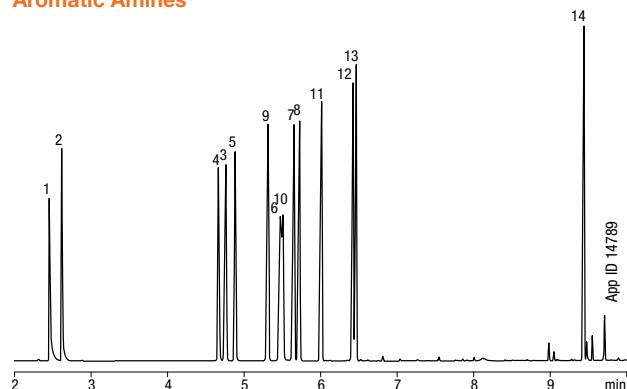
## ZB-1701

- Fast run and re-equilibration times for enhanced sample throughput and productivity
- Provides alternate selectivity to phenyl phases with similar polarity
- Equivalent to USP Phase G46
- Temperature Limits: -20 to 280/300 °C (Isothermal/TPGC)\*

Alternative to Any 14 %-Cyanopropylphenyl-86 %-Dimethylpolysiloxane Phase:

- DB-1701
- SPB-1701
- Rtx-VMS
- 007-1701
- BP10
- AT-1701
- Equity 1701
- Rtx-1701
- OV-1701
- CP-Sil 19 CB

### Aromatic Amines



Column: Zebtron ZB-1701

Dimensions: 30 meter x 0.25 mm x 0.25 µm

Part No.: 7HG-G006-11

Injection: Split 15:1 @ 220 °C, 1 µL

Carrier Gas: Helium @ 1.0 mL/min (constant flow)

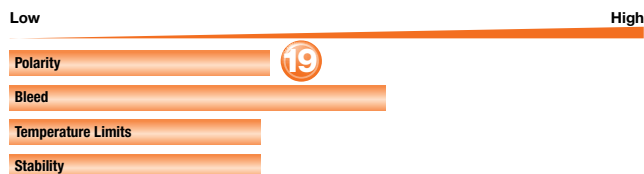
Oven Program: 60 °C for 1 min to 110 °C @ 30 °C/min to 135 °C @ 9 °C/min to 260 °C @ 30 °C/min for 2 min

Detector: MSD @ 180 °C

Sample: Analytes are at 1.58 mg/mL each

1. Piperidine
2. 2-Methylpiperidine
3. Aniline
4. Benzylamine
5. α-Phenylethylamine
6. N-Methylaniline
7. m-Toluidine
8. o-Toluidine
9. N,N-Dimethylaniline
10. β-Phenylethylamine
11. N-Ethylaniline
12. 2,4-Dimethylaniline
13. N,N-Diethylaniline
14. Dibenzylamine

### Column Profile



### Applications

- Pharmaceutical intermediates
- PCBs
- Alcohols
- Aromatic Hydrocarbons
- Phenols
- PAHs
- Tranquilizers
- Steroids
- Esters
- TMS Sugars
- Drugs
- Amines
- Solvents

### Ordering Information

#### Zebtron ZB-1701 GC Columns

ID (mm)	df (µm)	Temp. Limits °C	Part No.	Price
<b>15-Meter</b>				
0.25	0.25	-20 to 280/300	7EG-G006-11	
0.32	0.25	-20 to 280/300	7EM-G006-11	
0.32	1.00	-20 to 260/280	7EM-G006-22	
<b>30-Meter</b>				
0.25	0.25	-20 to 280/300	7HG-G006-11	
0.25	1.00	-20 to 260/280	7HG-G006-22	
0.32	0.25	-20 to 280/300	7HM-G006-11	
0.32	1.00	-20 to 260/280	7HM-G006-22	
0.53	1.00	-20 to 260/280	7HK-G006-22	
<b>60-Meter</b>				
0.25	0.25	-20 to 280/300	7KG-G006-11	
0.32	0.25	-20 to 280/300	7KM-G006-11	

Note: If you need a 5 in. cage, simply add a (-B) after the part number, e.g., 7HG-G006-11-B. Some exceptions may apply. Agilent 6850 and some SRI and process GC systems use only 5 in. cages. See p. 91.



**ZB-1701 Test Mix** Part No.: AGO-5156  
Price:



For enhanced response to Endrin and DDT, consider using ZB-1701P, see p. 117



\*Thicker films (≥1.0 µm df) are rated to 260/280 °C (Isothermal/TPGC).

Contact Phenomenex or your local Phenomenex distributor for additional GC products and applications.



**Extend column lifetime. Add a Z-guard to your next Zebtron GC order.**