

If Zebtron columns do not provide you with equivalent or better separations as compared to any other GC column of the same phase and comparable dimensions, send in your comparative data within 45 days and keep the column for FREE!

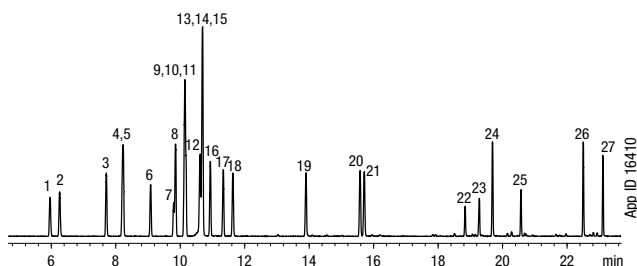
ZB-5MSi

- Highly inert—improved peak shape for acidic/basic compounds, drugs of abuse and pesticides
- Very low bleed (MS certified) levels provide maximum sensitivity
- Intense QC specifications ensure column-to-column performance
- ESC bonding results in phase stability and high temperature limits
- Traditional bonding chemistry provides the same selectivity as the ZB-5 columns
- Temperature Limits: -60 to 360/370 °C (Isothermal/TPGC)

Alternative to Any 5 %-Phenyl-95 %-Dimethylpolysiloxane Phase:

- DB-5
- Rtx-5MS
- MDN-5S
- Rxi-5ms
- HP-5msi
- Rtx-5Amine
- HP-5ms
- Rxi-5msi

Phenols



Column: Zebtron ZB-5MSi
Dimensions: 30 meter x 0.25 mm x 0.25 µm
Part No.: 7HG-G018-11
Injection: Split 5:1 @ 240 °C, 1 µL
Carrier Gas: Helium @ 1.2 mL/min (constant flow)
Oven Program: 60 °C to 140 °C @ 5 °C/min to 280 °C @ 10 °C/min
Detector: MSD @ 230 °C, 45-450 amu

- Sample:**
- | | |
|------------------------|--------------------------------|
| 1. Phenol | 16. 2,3-Dimethylphenol |
| 2. 2-Chlorophenol | 17. 3,4-Dimethylphenol |
| 3. 2-Methylphenol | 18. 2,6-Dichlorophenol |
| 4. 4-Methylphenol | 19. 4-Chloro-3-methylphenol |
| 5. 3-Methylphenol | 20. 2,4,6-Trichlorophenol |
| 6. 2,6-Dimethylphenol | 21. 2,4,5-Trichlorophenol |
| 7. 2-Nitrophenol | 22. 2,4-Dinitrophenol |
| 8. 2-Ethylphenol | 23. 4-Nitrophenol |
| 9. 2,4-Dimethylphenol | 24. 2,3,4,6-Tetrachlorophenol |
| 10. 3,5-Dimethylphenol | 25. 4,6-Dinitro-2-methylphenol |
| 11. 2,5-Dimethylphenol | 26. Pentachlorophenol |
| 12. 4-Ethylphenol | 27. Dinoseb |
| 13. 3-Ethylphenol | |
| 14. 2,4-Dichlorophenol | |
| 15. Benzoic Acid | |

Column Profile



Applications

- Drugs of abuse
- FAMES
- Nitrosamines
- Phenols
- Pesticides
- EPA Methods

Ordering Information

Zebtron ZB-5MSi GC Columns

ID(mm)	df(µm)	Temp. Limits °C	Part No.	Price
10-Meter				
0.18	0.18	-60 to 360/370	7CD-G018-08	
12-Meter				
0.20	0.33	-60 to 360/370	7DE-G018-14	
15-Meter				
0.25	0.25	-60 to 360/370	7EG-G018-11	
30-Meter				
0.25	0.25	-60 to 360/370	7HG-G018-11	
0.25	0.50	-60 to 360/370	7HG-G018-17	
0.25	1.00	-60 to 360/370	7HG-G018-22	
0.32	0.25	-60 to 360/370	7HM-G018-11	
0.32	0.50	-60 to 360/370	7HM-G018-17	
60-Meter				
0.25	0.25	-60 to 360/370	7KG-G018-11	

Note: If you need a 5 in. cage, simply add a (-B) after the part number, e.g., 7HG-G018-11-B. Some exceptions may apply. Agilent 6850 and some SRI and process GC systems use only 5 in. cages. See p. 86.



➔ For high temperature analysis, consider using a ZB-5HT, see p. 96

i Contact Phenomenex or your local Phenomenex distributor for additional GC products and applications.

⚠ **Extend column lifetime. Add a Z-guard to your next Zebtron GC order.**