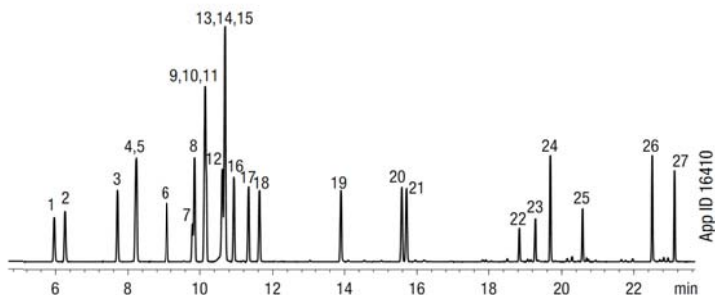


## Примеры хроматограмм ZB-5MSi

### Phenols



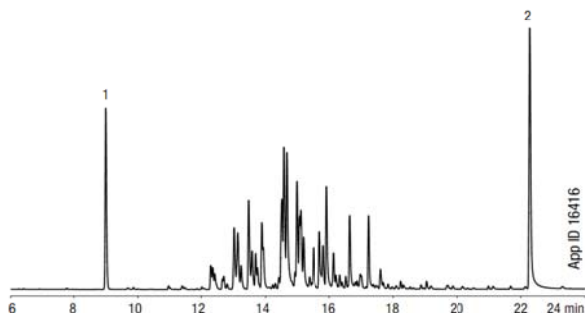
**Column:** Zebron ZB-5MSi  
**Dimensions:** 30 meter x 0.25 mm x 0.25  $\mu$ m  
**Part No.:** 7HG-G018-11  
**Injection:** Split 5:1 @ 240 °C, 1  $\mu$ L  
**Carrier Gas:** Helium @ 1.2 mL/min (constant flow)  
**Oven Program:** 60 °C to 140 °C @ 5 °C/min to 280 °C @ 10 °C/min  
**Detector:** MSD @ 230 °C, 45-450 amu

1. Phenol	16. 2,3-Dimethylphenol
2. 2-Chlorophenol	17. 3,4-Dimethylphenol
3. 2-Methylphenol	18. 2,6-Dichlorophenol
4. 4-Methylphenol	19. 4-Chloro-3-methylphenol
5. 3-Methylphenol	20. 2,4,6-Trichlorophenol
6. 2,6-Dimethylphenol	21. 2,4,5-Trichlorophenol
7. 2-Nitrophenol	22. 2,4-Dinitrophenol
8. 2-Ethylphenol	23. 4-Nitrophenol
9. 2,4-Dimethylphenol	24. 2,3,4,6-Tetrachlorophenol
10. 3,5-Dimethylphenol	25. 4,6-Dinitro-2-methylphenol
11. 2,5-Dimethylphenol	26. Pentachlorophenol
12. 4-Ethylphenol	27. Dinoseb
13. 3-Ethylphenol	
14. 2,4-Dichlorophenol	
15. Benzoic Acid	

## Исследования окружающей среды

### Aroclor 1232: EPA Method 8082

**Column:** Zebron ZB-5MSi  
**Dimensions:** 30 meter x 0.25 mm x 0.25  $\mu$ m  
**Part No.:** 7HG-G018-11  
**Injection:** Split 70:1 @ 210 °C, 1  $\mu$ L  
**Carrier Gas:** Helium @ 1.4 mL/min (constant flow)  
**Oven Program:** 120 °C for 1 min to 300 °C at 9 °C/min hold until last peak elutes  
**Detector:** ECD @ 310 °C  
**Sample:** 1. Tetrachloro-m-xylene (Surrogate)  
2. Decachlorobiphenyl (Surrogate)



### Phenols

**Column:** Zebron ZB-5MSi  
**Dimensions:** 30 meter x 0.25 mm x 0.25  $\mu$ m  
**Part No.:** 7HG-G018-11  
**Injection:** Split 5:1 @ 240 °C, 1  $\mu$ L  
**Carrier Gas:** Helium @ 1.2 mL/min (constant flow)  
**Oven Program:** 60 °C to 140 °C @ 5 °C/min to 280 °C @ 10 °C/min  
**Detector:** MSD @ 230 °C, 45-450 amu

1. Phenol	15. Benzoic Acid
2. 2-Chlorophenol	16. 2,3-Dimethylphenol
3. 2-Methylphenol	17. 3,4-Dimethylphenol
4. 4-Methylphenol	18. 2,6-Dichlorophenol
5. 3-Methylphenol	19. 4-Chloro-3-methylphenol
6. 2,6-Dimethylphenol	20. 2,4,6-Trichlorophenol
7. 2-Nitrophenol	21. 2,4,5-Trichlorophenol
8. 2-Ethylphenol	22. 2,4-Dinitrophenol
9. 2,4-Dimethylphenol	23. 4-Nitrophenol
10. 3,5-Dimethylphenol	24. 2,3,4,6-Tetrachlorophenol
11. 2,5-Dimethylphenol	25. 4,6-Dinitro-2-methylphenol
12. 4-Ethylphenol	26. Pentachlorophenol
13. 3-Ethylphenol	27. Dinoseb
14. 2,4-Dichlorophenol	

