

Zebron™ GC Columns



If Zebron columns do not provide you with equivalent or better separations as compared to any other GC column of the same phase and comparable dimensions, send in your comparative data within 45 days and keep the column for FREE!

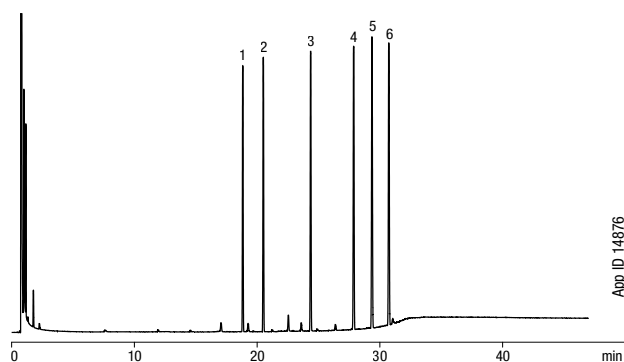
ZB-5

- Rugged, versatile low polarity column for general lab purpose
- Resilient to dirty samples—long column life
- Low bleed (MS Certified) especially suited to high sensitivity work using GC/MS
- Extremely inert for active compounds such as drugs or pesticides
- Great column for unknown samples
- Equivalent to USP Phase G27
- Temperature Limits: -60 to 360/370 °C (Isothermal/TPGC)*

Alternative to Any 5%-Phenyl-95%-Dimethylpolysiloxane Phase:

- | | | | | |
|------------|------------|---------|-----------|---------------|
| • DB-5 | • MDN-5 | • 007-5 | • BP5 | • HP-5 Trace |
| • HP-5 | • Equity-5 | • AT-5 | • Ultra 2 | • Analysis |
| • Rtx-5 | • SPB-5 | • BPX5 | • EC-5 | • CP-SIL 8 CB |
| • HP-PAS-5 | • OV-5 | • SE-54 | | |

Phthalate Esters: EPA Method 606



App ID 14876

- Column:** Zebron ZB-5
Dimensions: 30 meter x 0.53 mm x 1.50 µm
Part No.: 7HK-G002-28
Injection: Split 20:1 @ 300 °C, 1 µL
Carrier Gas: Helium @ 12.9 mL/min (constant flow)
Oven Program: 40 °C for 6 min to 300 °C @ 10 °C/min for 15 min
Detector: FID @ 300 °C
Sample:
1. Dimethyl Phthalate
 2. Diethyl Phthalate
 3. Di-n-butyl Phthalate
 4. Butyl Benzyl Phthalate
 5. Bis(2-ethylhexyl) Phthalate
 6. Di-n-octyl Phthalate



For ultra low bleed, consider using a ZB-5ms, see p. 95
 For high temperature analysis, consider using a ZB-5HT, see p. 96-97



*Thicker films (≥1.0 µm df) are rated to 340/360 °C (Isothermal/TPGC).
 Contact Phenomenex or your local Phenomenex distributor for additional GC products and applications.



Extend column lifetime. Add a Z-guard to your next Zebron GC order.

Column Profile



Applications

- | | | |
|--------------------------|-------------------------|---------------------|
| • Alkaloids | • FAMES | • Phenols |
| • Dioxins | • Halo-hydrocarbons | • Residual Solvents |
| • Drugs | • PCBs/Aroclors | • Semi-volatiles |
| • Essential Oils/Flavors | • Pesticides/Herbicides | |

Ordering Information

Zebron ZB-5 GC Columns

ID(mm)	df(µm)	Temp. Limits °C	Part No.	Price
15-Meter				
0.25	0.10	-60 to 360/370	7EG-G002-02	
0.25	0.25	-60 to 360/370	7EG-G002-11	
0.25	0.50	-60 to 360/370	7EG-G002-17	
0.25	1.00	-60 to 340/360	7EG-G002-22	
0.32	0.10	-60 to 360/370	7EM-G002-02	
0.32	0.25	-60 to 360/370	7EM-G002-11	
0.32	1.00	-60 to 340/360	7EM-G002-22	
0.53	0.50	-60 to 360/370	7EK-G002-17	
0.53	1.50	-60 to 340/360	7EK-G002-28	
0.53	3.00	-60 to 340/360	7EK-G002-36	
20-Meter				
0.18	0.18	-60 to 360/370	7FD-G002-08	
30-Meter				
0.25	0.10	-60 to 360/370	7HG-G002-02	
0.25	0.25	-60 to 360/370	7HG-G002-11	
0.25	0.50	-60 to 360/370	7HG-G002-17	
0.25	1.00	-60 to 340/360	7HG-G002-22	
0.32	0.25	-60 to 360/370	7HM-G002-11	
0.32	0.50	-60 to 360/370	7HM-G002-17	
0.32	1.00	-60 to 340/360	7HM-G002-22	
0.53	0.50	-60 to 360/370	7HK-G002-17	
0.53	1.50	-60 to 340/360	7HK-G002-28	
0.53	3.00	-60 to 340/360	7HK-G002-36	
0.53	5.00	-60 to 340/360	7HK-G002-39	
60-Meter				
0.25	0.10	-60 to 360/370	7KG-G002-02	
0.25	0.25	-60 to 360/370	7KG-G002-11	
0.25	0.50	-60 to 360/370	7KG-G002-17	
0.25	1.00	-60 to 340/360	7KG-G002-22	
0.32	0.25	-60 to 360/370	7KM-G002-11	
0.32	1.00	-60 to 340/360	7KM-G002-22	
0.53	1.50	-60 to 340/360	7KK-G002-28	

Note: If you need a 5 in. cage, simply add a (-B) after the part number, e.g., 7HG-G002-11-B. Some exceptions may apply. Agilent 6850 and some SRI and process GC systems use only 5 in. cages. See p. 86.



ZB-5 Test Mix Part No.: AGO-5155
 Price:

