

Zebron™ GC Columns



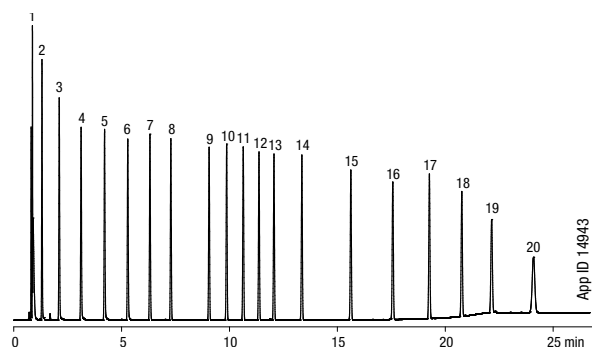
ZB-1

- Low polarity phase suited for true boiling point compounds
- Low bleed (MS Certified), low activity, and high efficiency
- Excellent resolving power of critical pairs in complex petrochemical samples
- Used for “fingerprinting” and routine quality control analyses (e.g., citrus oils)
- Equivalent to USP Phase G2
- Temperature Limits: -60 to 360/370 °C (Isothermal/TPGC)*

Alternative to Any 100 % Dimethylpolysiloxane Phase:

- | | | |
|-------------|-------------|---------------|
| • DB-1 | • HP-101 | • BP1 |
| • HP-PONA | • AT-1 | • SPB-1 |
| • DB-2887 | • Rtx-1PONA | • CP-Sil 5 CB |
| • DB-1 EVDX | • Rtx-1 F&F | • SE-30 |
| • Rtx-1 | • MET-1 | • 007-1 |
| • HP-1 | • Ultra 1 | • OV-1 |

Simulated Distillation Markers: ASTM Method D 2887



Column: Zebron ZB-1

Dimensions: 10 meter x 0.53 mm x 2.65 µm

Part No.: 7CK-G001-35

Injection: Split 10:1 @ 360 °C, 1 µL

Carrier Gas: Helium @ 8.1 mL/min (constant flow)

Oven Program: 35 °C to 360 °C @ 15 °C/min for 5 min

Detector: FID @ 360 °C

- Sample:
- | | |
|-----------------------|-----------------------------|
| 1. Pentane (C5) | 11. Hexadecane (C16) |
| 2. Hexane (C6) | 12. Heptadecane (C17) |
| 3. Heptane (C7) | 13. Octadecane (C18) |
| 4. Octane (C8) | 14. Eicosane (C20) |
| 5. Nonane (C9) | 15. Tetracosane (C24) |
| 6. Decane (C10) | 16. Octacosane (C28) |
| 7. Undecane (C11) | 17. Dotriacontane (C32) |
| 8. Dodecane (C12) | 18. Hexatriacontane (C36) |
| 9. Tetradecane (C14) | 19. Tetracontane (C40) |
| 10. Pentadecane (C15) | 20. Tetratetracontane (C44) |

i Engineered Self Crosslinking™ (ESC) polymer technology. Zebron GC Columns MS Certification, see p. 386

i *Thicker films (≥1.0 µm df) are rated to 340/360 °C (Isothermal/TPGC).

Contact Phenomenex or your local Phenomenex distributor for additional GC products and applications.



Extend column lifetime. Add a Z-guard to your next Zebron GC order.

Column Profile

Low High

Polarity	5
Bleed	
Temperature Limits	
Stability	

Applications

- | | | |
|-----------------------|------------------------|----------------------------|
| • Amines | • Drugs of abuse | • Sulfur compounds (light) |
| • Ethanol | • Essential oils | • Solvent impurities |
| • Gases (refinery) | • Hydrocarbons | • Simulated distillation |
| • MTBE | • Natural gas odorants | • Semi-volatiles |
| • Oxygenates and GROs | • Pesticides | |
| • PCBs | • Mercaptans | |

Ordering Information

Zebron ZB-1 GC Columns

ID (mm)	df (µm)	Temp. Limits °C	Part No.	Price
10-Meter				
0.53	2.65	-60 to 340/360	7CK-G001-35	
15-Meter				
0.25	0.10	-60 to 360/370	7EG-G001-02	
0.25	0.25	-60 to 360/370	7EG-G001-11	
0.25	1.00	-60 to 340/360	7EG-G001-22	
0.32	0.25	-60 to 360/370	7EM-G001-11	
0.32	1.00	-60 to 340/360	7EM-G001-22	
0.53	0.15	-60 to 360/370	7EK-G001-05	
0.53	0.50	-60 to 360/370	7EK-G001-17	
0.53	1.50	-60 to 340/360	7EK-G001-28	
30-Meter				
0.25	0.10	-60 to 360/370	7HG-G001-02	
0.25	0.25	-60 to 360/370	7HG-G001-11	
0.25	0.50	-60 to 360/370	7HG-G001-17	
0.25	1.00	-60 to 340/360	7HG-G001-22	
0.32	0.25	-60 to 360/370	7HM-G001-11	
0.32	0.50	-60 to 360/370	7HM-G001-17	
0.32	1.00	-60 to 340/360	7HM-G001-22	
0.32	3.00	-60 to 340/360	7HM-G001-36	
0.32	5.00	-60 to 340/360	7HM-G001-39	
0.53	0.50	-60 to 360/370	7HK-G001-17	
0.53	1.50	-60 to 340/360	7HK-G001-28	
0.53	3.00	-60 to 340/360	7HK-G001-36	
0.53	5.00	-60 to 340/360	7HK-G001-39	
50-Meter				
0.25	0.50	-60 to 360/370	7JG-G001-17	
60-Meter				
0.25	0.25	-60 to 360/370	7KG-G001-11	
0.25	1.00	-60 to 340/360	7KG-G001-22	
0.32	0.25	-60 to 360/370	7KM-G001-11	
0.32	1.00	-60 to 340/360	7KM-G001-22	
0.32	3.00	-60 to 340/360	7KM-G001-36	
0.32	5.00	-60 to 340/360	7KM-G001-39	
0.53	1.50	-60 to 340/360	7KK-G001-28	
100-Meter				
0.25	0.50	-60 to 360/370	7MG-G001-17	

Note: If you need a 5 in. cage, simply add a (-B) after the part number, e.g., 7HG-G001-11-B. Some exceptions may apply. Agilent 6850 and some SRI and process GC systems use only 5 in. cages. See p. 86



ZB-1 Test Mix Part No.: AGO-5155
Price: