

# Strata® Traditional SPE





If Strata SPE products do not perform as well or better than your current SPE product of similar phase, mass and size, send in your comparative data within 45 days and keep the Strata SPE product for FREE!

## Specialty Sorbents

### Alumina-N (AL-N)

A polar phase that allows for the extraction of polar compounds from food and environmental samples.


#### Ordering Information

Format	Sorbent Mass	Part Number	Unit	Price
<b>Tube</b>				
	500 mg	8B-S313-HBJ	3 mL (50/box)	
	1 g	8B-S313-JCH	6 mL (30/box)	
<b>Giga™ Tube</b>				
	2 g	8B-S313-KDG	12 mL (20/box)	

### Eco-Screen

This proprietary normal phase sorbent is topped with sodium sulfate to remove any excess water and used for the extraction of hydrocarbons from environmental samples, resulting in high recoveries of naphthalene.



#### Ordering Information

Format	Sorbent Mass	Part Number	Unit	Price
<b>Tube</b>				
	1 g	8B-S046-JBJ	3 mL (50/box)	

### Florisil® (FL-PR, pesticide residue grade)

A modified silica sorbent that contains a magnesium ion, allowing for the retention of polar and halogenated compounds, like pesticides, from environmental samples.

#### Ordering Information



Format	Sorbent Mass	Part Number	Unit	Price
<b>Tube</b>				
	500 mg	8B-S013-HBJ	3 mL (50/box)	
	500 mg	8B-S013-HCH	6 mL (30/box)	
	1 g	8B-S013-JCH**	6 mL (30/box)	
<b>Giga Tube</b>				
	1 g	8B-S013-JEG	20 mL (20/box)	
	2 g	8B-S013-KDG	12 mL (20/box)	
	5 g	8B-S013-LEG	20 mL (20/box)	
	10 g	8B-S013-MFF	60 mL (16/box)	

\*\*Tab-less tubes available. Contact Phenomenex for details.

### Melamine

A proprietary phase that allows for the simultaneous extraction of melamine and cyanuric acid out of food and biological samples.

#### Ordering Information

Format	Sorbent Mass	Part Number	Unit	Price
<b>Tube</b>				
	100 mg	8B-S049-EBJ	3 mL (50/box)	
	200 mg	8B-S049-FBJ	3 mL (50/box)	
<b>96-Well Plate</b>				
	50 mg	8E-S049-DGB	2 Plates/Box	

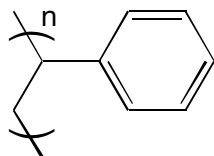


If Strata SPE products do not perform as well or better than your current SPE product of similar phase, mass and size, send in your comparative data within 45 days and keep the Strata SPE product for FREE!

## Specialty Sorbents

### SDB-L (styrene-divinylbenzene)

A rugged polymer sorbent that is pH stable from 1-14 and offers hydrophobic and aromatic selectivity for reversed phase applications.



#### Ordering Information

Format	Sorbent Mass	Part Number	Unit	Price
<b>Tube</b>				
	100 mg	8B-S014-EAK	1 mL (100/box)	
	200 mg	8B-S014-FBJ	3 mL (50/box)	
	200 mg	8B-S014-FCH	6 mL (30/box)	
	500 mg	8B-S014-HBJ	3 mL (50/box)	
	500 mg	8B-S014-HCH	6 mL (30/box)	
	1 g	8B-S014-JCH	6 mL (30/box)	

#### Giga™ Tube

	10 g	8B-S014-MFF	60 mL (16/box)	
--	------	-------------	----------------	--

#### 96-Well Plate

	50 mg	8E-S014-DGB	2 Plates/Box	
--	-------	-------------	--------------	--

### PAH (Polycyclic Aromatic Hydrocarbons)

This proprietary sorbent was designed to provide high recoveries of polycyclic aromatic hydrocarbons from water (as specified in EPA Method 550.1) while simultaneously removing humic acids from the extract.

#### Ordering Information

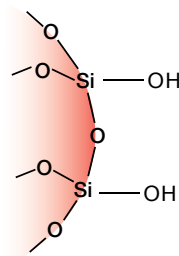
Format	Sorbent Mass	Part Number	Unit	Price
<b>Tube</b>				
	750 mg	8B-S130-WCH	6 mL (30/box)	
	1.5 g	8B-S130-7CH	6 mL (30/box)	



Don't see the size or format you want? Contact Phenomenex or your local distributor for other dimensions, Giga tubes, and bulk sorbent pricing and part numbers.

### EPH (Extractable Petroleum Hydrocarbons)

This specialty normal phase sorbent was developed for the fractionation of aliphatic and aromatic hydrocarbons from environmental samples.



#### Ordering Information

Format	Sorbent Mass	Part Number	Unit	Price
<b>Tube</b>				
	500 mg	8B-S031-HBJ	3 mL (50/box)	

#### Giga Tube

	5 g	8B-S031-LEG	20 mL (20/box)	
--	-----	-------------	----------------	--

#### Teflon® Giga Tube

	5 g	8B-S031-LEG-T	20 mL (20/box)	
--	-----	---------------	----------------	--

### Sodium Sulfate

A specialized sorbent that is used for the removal of aqueous residues from organic solutions in an effort to reduce blow-down time.

#### Ordering Information

Format	Sorbent Mass	Part Number	Unit	Price
<b>Tube</b>				
	1 g	8B-S124-JCH	6 mL (30/box)	
<b>Giga Tube</b>				
	1 g	8B-S124-JEG	20 mL (20/box)	
	5 g	8B-S124-LEG	20 mL (20/box)	