

Strata® Traditional SPE

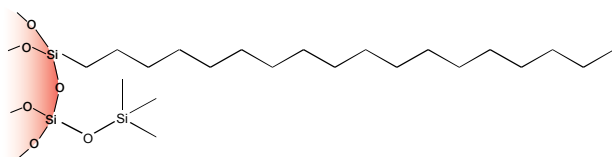


If Strata SPE products do not perform as well or better than your current SPE product of similar phase, mass and size, send in your comparative data within 45 days and keep the Strata SPE product for FREE!

Reversed Phase Sorbents

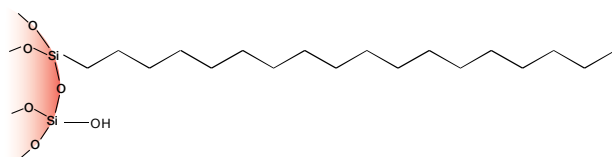
C18-E

End-capped C18 sorbent that offers strong hydrophobic retention with negligible secondary polar interactions from active silanol groups.



C18-U

C18 sorbent with no end-capping, giving the phase moderate hydrophobic selectivity with slight polar selectivity due to the active silanol groups.



Ordering Information

Format	Sorbent Mass	Part Number	Unit	Price
Tube				
	50 mg	8B-S001-DAK	1 mL (100/box)	
	100 mg	8B-S001-EAK**	1 mL (100/box)	
	100 mg	8B-S001-EBJ	3 mL (50/box)	
	200 mg	8B-S001-FBJ**	3 mL (50/box)	
	200 mg	8B-S001-FCH	6 mL (30/box)	
	500 mg	8B-S001-HBJ	3 mL (50/box)	
	500 mg	8B-S001-HCH	6 mL (30/box)	
	1 g	8B-S001-JEG	20 mL (20/box)	

Giga™ Tube

	500 mg	8B-S001-HDG	12 mL (20/box)	
	2 g	8B-S001-KDG	12 mL (20/box)	
	5 g	8B-S001-LEG	20 mL (20/box)	
	10 g	8B-S001-MFF	60 mL (16/box)	
	20 g	8B-S001-VFF	60 mL (16/box)	
	50 g	8B-S001-YSN	150 mL (8/box)	
	70 g	8B-S001-ZSN	150 mL (8/box)	

96-Well Plate

	25 mg	8E-S001-CGB	2 Plates/Box	
	50 mg	8E-S001-DGB	2 Plates/Box	
	100 mg	8E-S001-EGB	2 Plates/Box	

On-line Extraction Cartridge

Description	Part Number	Unit/Box	Price
Strata C18-E on-line extraction cartridge, 20 x 2.0 mm	00M-S039-B0-CB	ea	
Cartridge holder, 20 mm	CH0-5845	ea	

**Tab-less tubes available. Contact Phenomenex for details.



For Large Volume Cleanup/Flash Analysis, use Giga Tubes
For SPE Vacuum Manifolds and Accessories, see pp. 73-75

Ordering Information

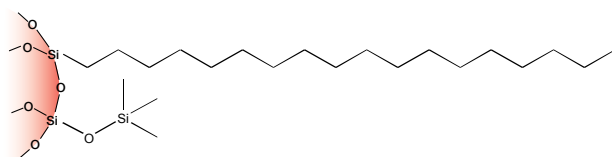
Format	Sorbent Mass	Part Number	Unit	Price
Tube				
	100 mg	8B-S002-EAK	1 mL (100/box)	
	200 mg	8B-S002-FBJ	3 mL (50/box)	
	500 mg	8B-S002-HBJ	3 mL (50/box)	
	500 mg	8B-S002-HCH	6 mL (30/box)	
	1 g	8B-S002-JCH	6 mL (30/box)	

96-Well Plate

	50 mg	8E-S002-DGB	2 Plates/Box	
	100 mg	8E-S002-EGB	2 Plates/Box	

C18-T

A wide-pore C18 sorbent that offers strong hydrophobic selectivity and accommodates molecules up to 75 kDa in size.



Ordering Information

Format	Sorbent Mass	Part Number	Unit	Price
Tube				
	100 mg	8B-S004-EAK	1 mL (100/box)	
	200 mg	8B-S004-FBJ	3 mL (50/box)	
	500 mg	8B-S004-HBJ	3 mL (50/box)	
	500 mg	8B-S004-HCH	6 mL (30/box)	
	1 g	8B-S004-JCH	6 mL (30/box)	

96-Well Plate

	25 mg	8E-S004-CGB	2 Plates/Box	
	50 mg	8E-S004-DGB	2 Plates/Box	

Strata® Traditional SPE

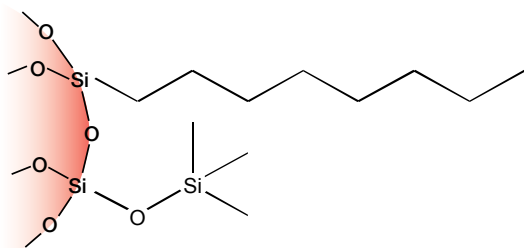


If Strata SPE products do not perform as well or better than your current SPE product of similar phase, mass and size, send in your comparative data within 45 days and keep the Strata SPE product for FREE!

Reversed Phase Sorbents

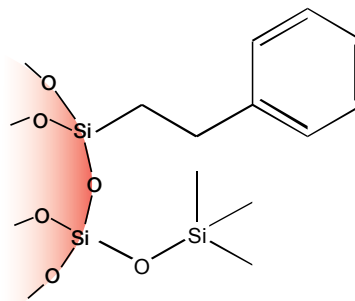
C8

An end-capped C8 sorbent that offers moderate hydrophobic retention with negligible secondary polar interactions from active silanol groups.



Phenyl

A short alkyl chain with a phenyl group provides moderate hydrophobic selectivity and aromatic selectivity through π - π interactions.



Ordering Information

Format	Sorbent Mass	Part Number	Unit	Price
Tube				
	100 mg	8B-S005-EAK	1 mL (100/box)	
	200 mg	8B-S005-FBJ	3 mL (50/box)	
	500 mg	8B-S005-HBJ	3 mL (50/box)	
	500 mg	8B-S005-HCH	6 mL (30/box)	
	1 g	8B-S005-JCH	6 mL (30/box)	
Giga™ Tube				
	2 g	8B-S005-KDG	12 mL (20/box)	
	5 g	8B-S005-LEG	20 mL (20/box)	
	10 g	8B-S005-MFF	60 mL (16/box)	
96-Well Plate				
	25 mg	8E-S005-CGB	2 Plates/Box	
	50 mg	8E-S005-DGB	2 Plates/Box	
	100 mg	8E-S005-EGB	2 Plates/Box	

On-line Extraction Cartridge

Description	Part Number	Unit/Box	Price
Strata C8 on-line extraction cartridge, 20 x 2.0 mm	00M-S101-B0-CB	ea	
Cartridge holder, 20 mm	CH0-5845	ea	



For Large Volume Cleanup/Flash Analysis, use Giga Tubes
For SPE Vacuum Manifolds and Accessories, see pp. 73-75



Don't see the size or format you want? Contact Phenomenex or your local distributor for other dimensions, Giga tubes, and bulk sorbent pricing, and part numbers.

Ordering Information

Format	Sorbent Mass	Part Number	Unit	Price
Tube				
	100 mg	8B-S006-EAK	1 mL (100/box)	
	200 mg	8B-S006-FBJ	3 mL (50/box)	
	500 mg	8B-S006-HBJ	3 mL (50/box)	
	500 mg	8B-S006-HCH	6 mL (30/box)	
	1 g	8B-S006-JCH	6 mL (30/box)	
96-Well Plate				
	25 mg	8E-S006-CGB	2 Plates/Box	
	50 mg	8E-S006-DGB	2 Plates/Box	
	100 mg	8E-S006-EGB	2 Plates/Box	