

Strata® Traditional SPE

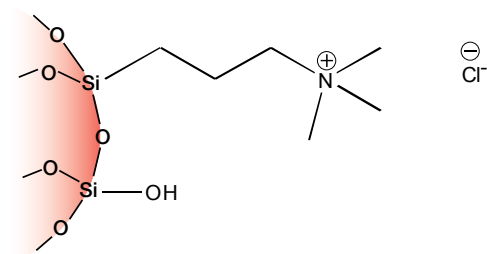
guarantee

If Strata SPE products do not perform as well or better than your current SPE product of similar phase, mass and size, send in your comparative data within 45 days and keep the Strata SPE product for FREE!

Ion-Exchange Sorbents

SAX (strong anion-exchange)

The quaternary amine phase remains positively charged under all conditions, giving a strong anion-exchange mechanism of retention.



Ordering Information

| Format | Sorbent Mass | Part Number | Unit | Price |
|-------------|--------------|-------------|----------------|-------|
| Tube | | | | |
| | 100 mg | 8B-S008-EAK | 1 mL (100/box) | |
| | 100 mg | 8B-S008-EBJ | 3 mL (50/box) | |
| | 200 mg | 8B-S008-FBJ | 3 mL (50/box) | |
| | 500 mg | 8B-S008-HBJ | 3 mL (50/box) | |
| | 500 mg | 8B-S008-HCH | 6 mL (30/box) | |
| | 1 g | 8B-S008-JCH | 6 mL (30/box) | |

Giga™ Tube

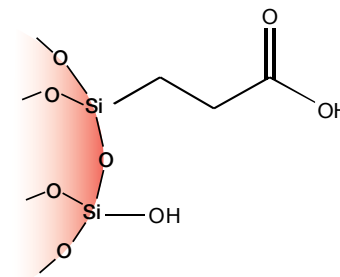
| | | | | |
|--|--------|-------------|----------------|--|
| | 500 mg | 8B-S008-HDG | 12 mL (20/box) | |
| | 2 g | 8B-S008-KDG | 12 mL (20/box) | |
| | 5 g | 8B-S008-LEG | 20 mL (20/box) | |
| | 10 g | 8B-S008-MFF | 60 mL (16/box) | |
| | 20 g | 8B-S008-VFF | 60 mL (16/box) | |

96-Well Plate

| | | | | |
|--|--------|-------------|--------------|--|
| | 25 mg | 8E-S008-CGB | 2 Plates/Box | |
| | 50 mg | 8E-S008-DGB | 2 Plates/Box | |
| | 100 mg | 8E-S008-EGB | 2 Plates/Box | |

WCX (weak cation-exchange)

A carboxylic acid group is bonded to the surface of the silica particle, giving a weak cation-exchange selectivity.



Ordering Information

| Format | Sorbent Mass | Part Number | Unit | Price |
|-------------|--------------|-------------|----------------|-------|
| Tube | | | | |
| | 100 mg | 8B-S027-EAK | 1 mL (100/box) | |
| | 200 mg | 8B-S027-FBJ | 3 mL (50/box) | |
| | 500 mg | 8B-S027-HBJ | 3 mL (50/box) | |
| | 500 mg | 8B-S027-HCH | 6 mL (30/box) | |
| | 1 g | 8B-S027-JCH | 6 mL (30/box) | |

Giga Tube

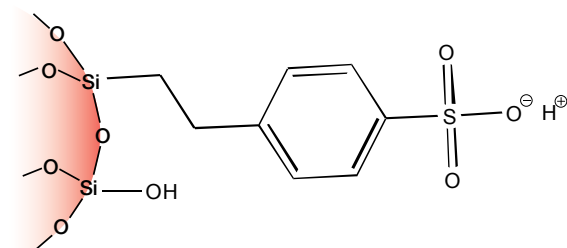
| | | | | |
|--|------|-------------|----------------|--|
| | 2 g | 8B-S027-KDG | 12 mL (20/box) | |
| | 5 g | 8B-S027-LEG | 20 mL (20/box) | |
| | 10 g | 8B-S027-MFF | 60 mL (16/box) | |

96-Well Plate

| | | | | |
|--|--------|-------------|--------------|--|
| | 25 mg | 8E-S027-CGB | 2 Plates/Box | |
| | 50 mg | 8E-S027-DGB | 2 Plates/Box | |
| | 100 mg | 8E-S027-EGB | 2 Plates/Box | |

SCX (strong cation-exchange)

A benzene sulfonic acid group is bonded to the surface of the silica particle, giving strong cation-exchange selectivity.



Ordering Information

| Format | Sorbent Mass | Part Number | Unit | Price |
|-------------|--------------|-------------|----------------|-------|
| Tube | | | | |
| | 100 mg | 8B-S010-EAK | 1 mL (100/box) | |
| | 100 mg | 8B-S010-EBJ | 3 mL (50/box) | |
| | 200 mg | 8B-S010-FBJ | 3 mL (50/box) | |
| | 500 mg | 8B-S010-HBJ | 3 mL (50/box) | |
| | 500 mg | 8B-S010-HCH | 6 mL (30/box) | |
| | 1 g | 8B-S010-JCH | 6 mL (30/box) | |

Giga Tube

| | | | | |
|--|------|-------------|----------------|--|
| | 2 g | 8B-S010-KDG | 12 mL (20/box) | |
| | 5 g | 8B-S010-LEG | 20 mL (20/box) | |
| | 10 g | 8B-S010-MFF | 60 mL (16/box) | |
| | 20 g | 8B-S010-VFF | 60 mL (16/box) | |

96-Well Plate

| | | | | |
|--|--------|-------------|--------------|--|
| | 25 mg | 8E-S010-CGB | 2 Plates/Box | |
| | 50 mg | 8E-S010-DGB | 2 Plates/Box | |
| | 100 mg | 8E-S010-EGB | 2 Plates/Box | |